

N.A.M.S.S.

Membership Information:

Annual dues: \$15.00/ year

NAMSS membership includes your farm listing with links to your email and website on the MuleSheep.com website, newsletters and e-updates, and your farm information included in promotional flyers handed out at sheep events.

For more information contact the Membership Secretary at:

info@mulesheep.com



Scotch Mule ewe lambs

www.MuleSheep.com

*North American
Mule Sheep Society*

The North American Mule Sheep Society (NAMSS) is an organization formed for the education, promotion & marketing of the breeds of sheep that comprise the crossbred breeding scheme, commonly referred to in the UK as the "3-tier system".

The 3-tier breeding scheme utilizes traditional British Hill and Upland ewes from breeds such as the Scottish Blackface, North Country & Border Cheviots, Clun Forest, Shetland, and Dorset sheep. These hardy and adaptable ewes are bred to a Bluefaced Leicester tup to produce the popular and prolific commercial ewe called the 'Mule'.

The final tier of the scheme is to utilize the heavy carcass genetics of terminal rams, the British type Texel and Suffolk, to economically and efficiently produce wholesome, healthy, grass fed lamb.

Mules

The Natural Choice!

*North American
Mule Sheep
Society*



N.A.M.S.S.

www.MuleSheep.com

Three-tier Breeding Scheme

Great Britain has developed a unique way of producing prime lamb, a.k.a market lamb. The process is traditionally called a Three-tier system. This Stratified or Three-tier system has been perfected over hundreds of years in the United Kingdom. It works because the breeds involved have been fine tuned to genetically mesh with each other during each step of the system.

It all starts at the top with what is sometimes referred to as a "hill or upland sheep". These hill and upland sheep are typically the local or endemic breed to a given area or region that survives well in its environment. Examples of a few regional breeds are: Scottish Blackface in Scotland, Swaledale in Northern England, Welsh Mountain in Wales, and the Clun Forest in Shropshire.

These hill and upland ewes are then bred to a Bluefaced Leicester ram to produce crossbred progeny referred to as "Mules", Scotch Mules, North of England Mules, Welsh Mules, Clun Mules, Cheviot Mules, and more recently from the lowlands the Dorset Mule. The Mule is the backbone of the UK's prime lamb production system. Fifty percent of all UK crossbred (commercial) ewes are Mules. These Mules inherit the vigor and hardiness of its dam with the added benefit of an improved wool clip, increased body size and capacity, higher prolificity (some flocks exceed 200%), early maturity (it is common to breed the Mule ewe lamb in her first year) and milkiness from her Bluefaced Leicester sire.

The Mule ewe lambs are either retained for the next step of the system, or sold off the farm in the fall at the livestock markets by the thousands. They are purchased to make-up large commercial flocks for the UK's "prime" lamb production. In the final tier of the scheme the Mule ewes are bred to terminal sires, renowned for their heavy carcass genetics; the preferred ones being either a "British" Suffolk or the Texel. This third step in

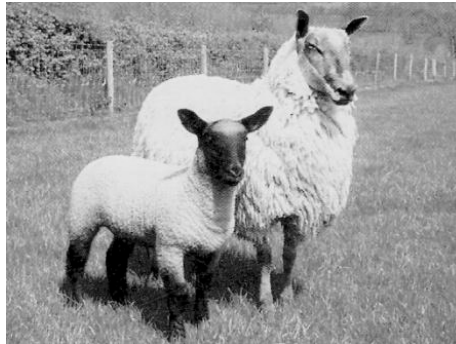
the system produces a carcass lamb that easily reaches market weights off milk and grass.

Here in the States there has been an increased interest to replicate the UK's 3-tier system. Breeders of hill and upland type ewes have acquired Bluefaced Leicester rams for Mule ewe production. They then either market the Mule ewe lambs, or in some cases complete the system by breeding the Mules to either a UK genetically improved Suffolk, or a Texel sire. This type of prime lamb is filling a growing niche in the specialty trade to restaurants, internet and catalog orders, the ethnic market, and the ever growing demand by consumers for wholesome, healthy, grass fed lamb.

MULES!

The Premier

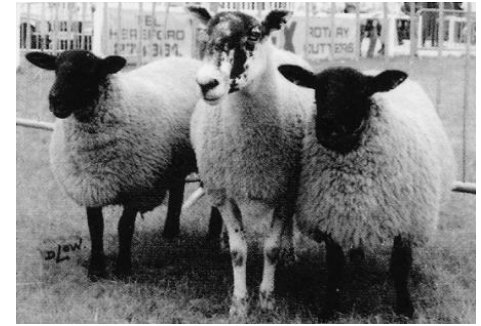
*Easy care Commercial Ewe
Prolific, Hardy, Milky*



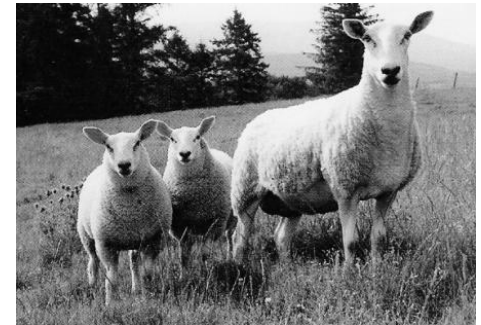
Clun Mule ewe w/ Suffolk x lamb



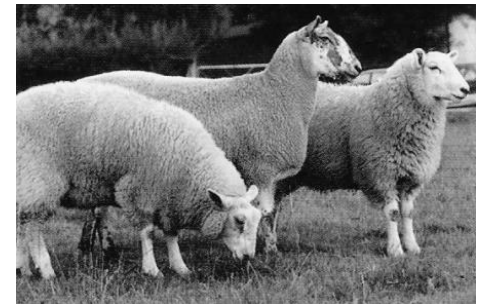
Scotch Mule ewe w/ Texel x lambs



North of England Mule ewe w/ Suffolk x lambs



NCC Mule ewe w/ Texel x lambs



Welsh Mule ewe w/ Texel x lambs



Exmoor Mule ewe